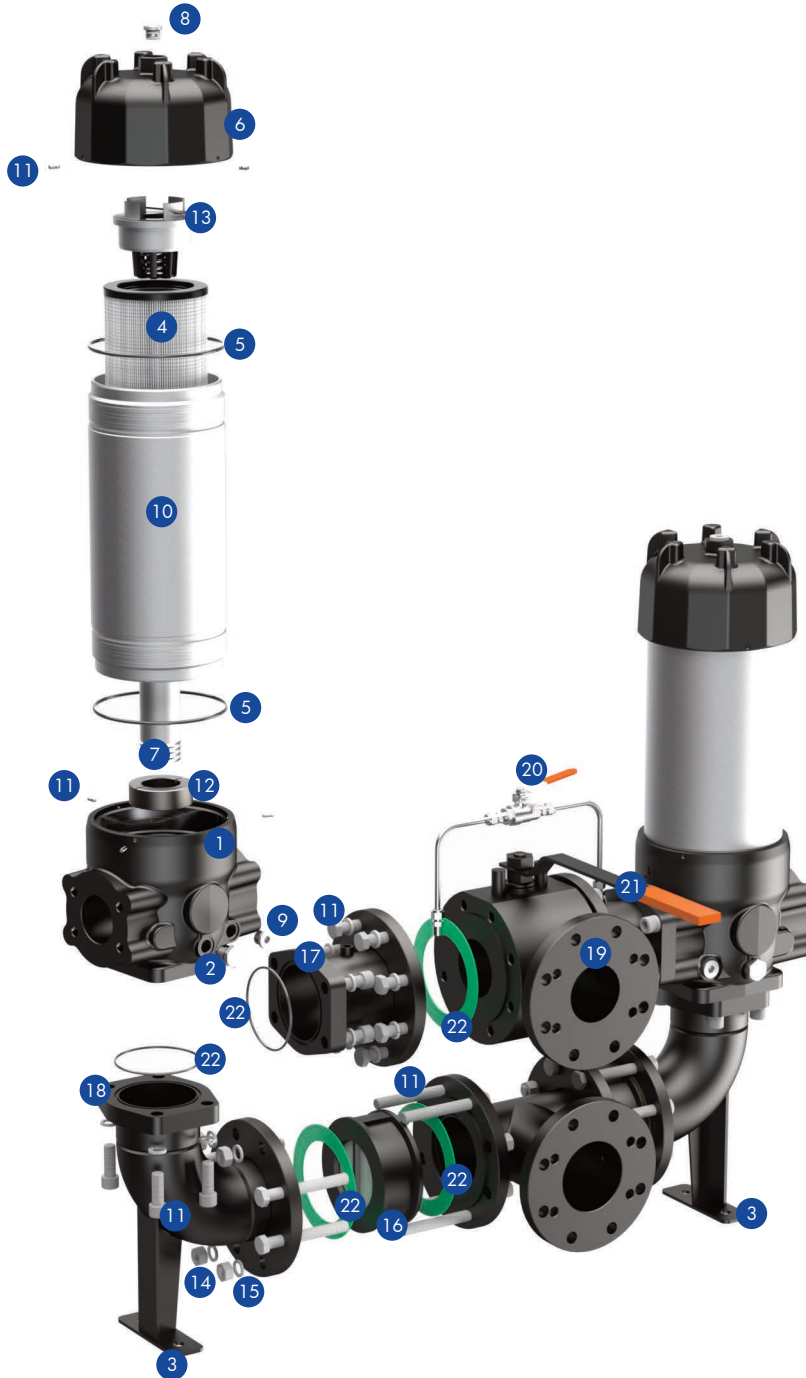


# FLRD-R4 SERIES

In line medium pressure filters



## USER TIPS



- 1 FILTER HEAD
- 2 INDICATOR PORT
- 3 FIXING HOLES
- 4 FILTER ELEMENT
- 5 SEAL KIT FILTERS
- 6 FILTER BOWL
- 7 INTERNAL TUBE FOR LOW FLOW RATE
- 8 VENT PLUG
- 9 DRAIN PLUG
- 10 FILTER BODY
- 11 FIXING SCREWS
- 12 ADAPTER
- 13 BY-PASS ASSEMBLY
- 14 NUT
- 15 WASHER
- 16 CHECK VALVE
- 17 FLANGE ASSEMBLY
- 18 FITTING ASSEMBLY
- 19 VALVE
- 20 PRESSURE EQUALIZING
- 21 SWITCHING LEVER
- 22 SEAL KIT PIPINGS

### SPARE SEAL KIT PART NUMBER

	NBR	FKM
FLRD...F10... (22) (3" SAE / DN 80)	06.021.00407	06.021.00408
FLRD...F12... (22) (4" SAE / DN 100)	06.021.00409	06.021.00410
FLR... (5)	06.021.00389	06.021.00390

### BOWL/BODY TIGHTENING TORQUE

screw up filter bowl/body till end

### INDICATOR/DRAIN/VENT TIGHTENING TORQUE

50 Nm

# FLRD-R4 SERIES

In line medium pressure filters



## WARNING

- ⚠ Make sure that Personal Protective Equipment (PPE) is worn during installation and maintenance operation.

## DISPOSAL OF FILTER ELEMENT

- ⚠ The used filter elements and the filter parts dirty of oil are classified as "Dangerous waste material": they must be disposed according to the local laws by authorized Companies.

## INSTALLATION

- ⚠ 1. Secure the frame of the filter using the fixing holes (3).
- 2. The IN and OUT ports must be connected to the hoses in the correct flow direction.
- 3. Verify that no tension is present on the filter after mounting.
- 4. Enough space must be available for filter element replacement.
- 5. The visual clogging indicator must be in a easily viewable position.
- 6. When a electrical indicator is used, make sure that it is properly wired.
- ⚠ 7. Never run the system with no filter element fitted.
- 8. Keep in stock a spare FILTREC filter element for timely replacement when required.
- 9. Filter housing should be earthed.

## OPERATION

- ⚠ 1. The filter must work within the operating conditions of pressure, temperature and compatibility given in the first page of this data sheet.
- 2. The filter element must be replaced as soon as the clogging indicator signals at working temperature (in cold start conditions, oil temperature lower than 30°C, a false alarm can be given due to oil viscosity).
- 3. If no clogging indicator is mounted, replace the element according to the system manufacturer's recommendations.

## MAINTENANCE

- ⚠ 1. Operate and hold pressure equalizing (20) lever located behind switching lever. Pull catch knob and swivel switching lever (21).
- 2. Loosen vent screw (8).
- 3. Remove drain plug (9) in housing bottom and drain oil.
- 4. Unscrew the 3 grub screws (11) of the filter bowl (6).
- 5. Unscrew filter bowl counter-clockwise.
- 6. Pull out the bypass assembly (13) with the handle and separate it from the filter element.
- 7. Lift out filter element (4).
- 8. Check seal on filter bowl (5). We recommend replacement in any case.
- 9. Make sure that the order number on the spare element corresponds to the order number of the filter name-plate. To ensure no contamination occurs during the exchange of the element, first open the plastic bag, then push the element over the spigot in the filter head. Now remove plastic bag.
- ⚠ 10. Push the element carefully over the spigot, insert the bypass assembly (13) into the filter element mount the filter bowl (6) and tighten the 3 grub screws (11).
- 11. Tighten drain plug (9) in housing bottom.
- 12. To refill the filter chamber, operate only the pressure equalizing lever, until fluid emerges bubble-free from the vent cavity.
- 13. Tight vent screw. Check for leakage by actuating the equalizing lever again.
- 14. The used filter elements can not be cleaned and re-use.