



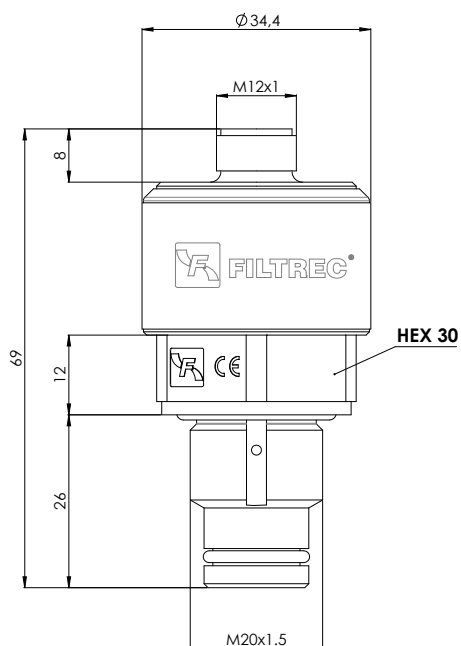
EA SERIES

4-20 mA Electronical differential pressure transmitter

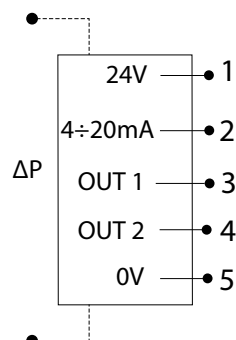


PRESSURE:	Max operating up to 420 bar
CONNECTION:	M20x1,5
MATERIALS:	Body: Brass Cover and connector: PA66 + G.F. Seal: FKM
RANGE ΔP :	2,0 ÷ 8,0 bar
ELECTRICAL SPECS.:	Analog output 4÷20 mA N°2 digital output PNP - N.O.
CONNECTOR TYPE:	M12x1 - 5 PIN
DEGREE OF PROTECTION:	IP67 according to EN60529
OPERATING TEMPERATURE:	-30°C - +80°C
FLUID COMPATIBILITY:	Full with HH-HL-HM-HV-HETG-HEES, HFA-HFB-HFC (acc. to ISO 6743/4) For use with other fluid please contact Filtrec Customer Service (info@filtrec.it).

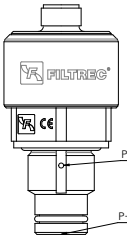
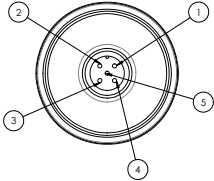
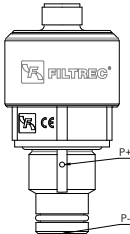
OVERALL DIMENSIONS AND ELECTRICAL SCHEME



Weight: : ~140g



ORDERING INFORMATION / DETAILS

ORDER CODE	MODEL	VIEW	RANGE	ELECTRICAL CONNECTION
04.006.00629	EA F8		2,0 ÷ 8,0 bar	 <ol style="list-style-type: none"> 24Vdc ± 10% Analog output 4÷20mA 4mA = 2 bar 20mA = 8 bar Digital output 1 calibrated at 6 bar – PNP - Max Load 0,2A – N.O. Digital output 2 calibrated at 8 bar – PNP - Max Load 0,2A – N.O. 0V - GND
04.006.00630	EAX F8			

Note: Accuracy at 25°C max ±5% FS; Thermal drift (range T*÷70°C) max ±6% FS

Time: Activation time = 3s

Response time = Analog out ~ 0.2s

Digital out ~ 0.1s

Thermal Lock Out: T*=20°C±2°

If T<T*: digital Out 1 N.O., digital Out 2 N.O., Analogue Out 3mA

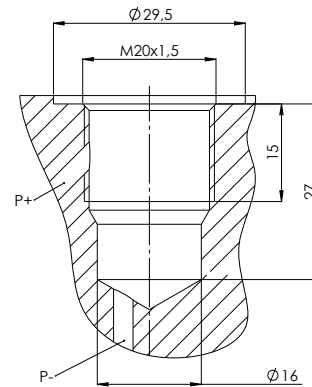
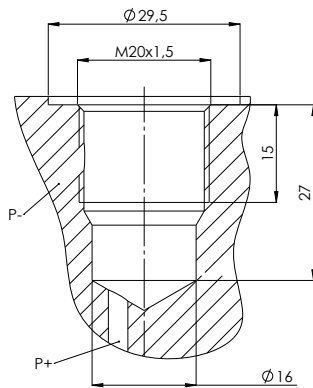


50 / 90 Nm - See hydraulic filter catalogues

INDICATOR SEAT

EA...

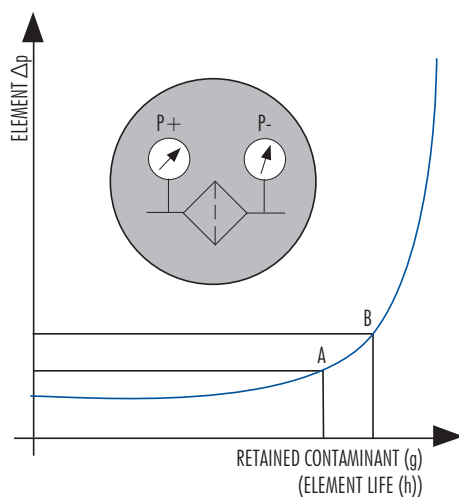
EAX...



Dimensions and tolerances available on request

USER INFORMATION

The **Differential indicator** measures the Δp between upstream and downstream of the filter element, i.e. it is the ideal indicator for the in line applications.



The **Pressure Drop** (Δp = differential pressure) through the filter increases during the system operation due to the contaminant retained by the filter element.

The filter element must be replaced when the indicator shows an alarm and before the Δp reaches the by-pass set value (i.e. the set value A of the clogging indicator must always be lower than the set value B of the by-pass value).

OPTIONAL VERSION

Subject to MOQ our differential indicators type EA... different ranges and special certifications can be supplied.

Contact our Customer Service for further information.

APPLICATION

The following table shows the type of indicator available according to the filter used.

APPLICATION	FILTER CODE	INDICATOR MODEL	
		EA8	EAX8
IN LINE HIGH PRESSURE	F100	X	
	F280	X	
	F420	X	
	FD3		X
	FDM		X
	FH100	X	
	FH250	X	
	FH320	X	
	FH323-324	X	
	FH420	X	
	FML320	X	
IN LINE MEDIUM PRESSURE	FLR		X
	FLRD		X
	F040	X	

